

HouseLogix Wireless Propane Level Sensor

Installation Instructions V1.00 - 20140303

Pre-installation Instructions:

1. If you did not purchase the optional battery charger, it is recommended that you charge the solar cell for 8 hours in sunlight before installing the unit, allowing for proper testing of the unit with your Control4 system. If you purchased the optional battery pack, you can disregard this pre-installation charging period.
2. You must have the driver license code to use the driver. This information was sent via e-mail to the e-mail address associated with the purchase of this product.



Tools Needed For Installation:

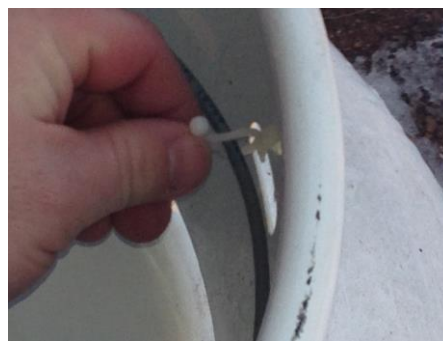
1. Drill
2. 1/2" Metal Drill Bit (for installing sensor on tank cover)
3. 3/16" metal drill bit (for installing wire management)

Tank Transmitter Installation

1. Drill a 1/2" hole in the top of the tank cover. Install the transmitter with the 1/2" nut. Rotate the transmitter so the solar cell faces south.



2. Drill 3/16" size holes for the wire manager hanger and install as required, routing the wire around the inside circumference of the tank cover and to the cover hinge to prevent entanglement with the tank hardware.



3. Plug the sensor cable into the Remote Ready dial and transmitter cable.



4. Document the five digits transmitter ID number laser engraved on the transmitter cover.



Base Station Receiver Installation

1. Install the base station in RF "listening" distance to the transmitters. The propane level receiver has a range of 90' to 120' (longer distanced are achieved in an open air installation) in a standard home construction. If the base station needs to be extended, standard DB9 to RJ45 extenders can be used to extend the receiver 100' from the Control4 I/O device.
2. Plug in the provided MiniDIN-To-Serial cable to the MiniDIN connector on the receiver



3. Plug in provided power supply to receiver.



Installing the Control4 Driver:

1. To download the driver, visit: <http://www.houselogix.com/drivers/default-dealer.asp> .
2. Save the Propane Sensor Driver into the My Documents\Control4\Drivers Folder.
3. Search for "Propane" under the search tab in System Design.
4. Load the driver in the proper room; enter the activation code that was provided by HouseLogix.
5. Enter the 5 digit ID number of the transmitter in the Tank 1: ID field. Up to 5 transmitters can be included in one driver.
6. Bind the driver to the correct serial port that the receiver base station is connected to. Power on the base station. You should receive an updated status message, in the driver, that the base station has booted.
7. Once the transmitter receives sufficient solar energy (after approximately 6 to 8 hours of sun light), messages will begin to be sent every 8 to 10 minutes.